

# PRODUCT PROFILE



**READY TO DRINK TEAS**  
*with antioxidant for  
better health*



## READY TO DRINK TEAS

Tea concentrates are prepared from black and green teas which have a shelf life of six months under room temperature (25° C) in airtight glass or PET bottles and remain safe for use for more than a year under controlled temperature (4° C) in sealed bottles. The products were tested for microbial load and objectionable microorganism and were found free from them. No pesticide residues were detected.

The tea concentrates are further converted into ready to drink teas (RTDs) with sugar/sweeteners, purified water and carbonation.

The RTDs also have a shelf life of six months without deterioration in their quality.

All the health attributes of common tea, such as natural antioxidants of tea, unique aroma of brewed tea and mood enhancing natural constituents of tea are well preserved in these formulations.

The ready made drinks can be blended with other permitted flavors as per the market demand

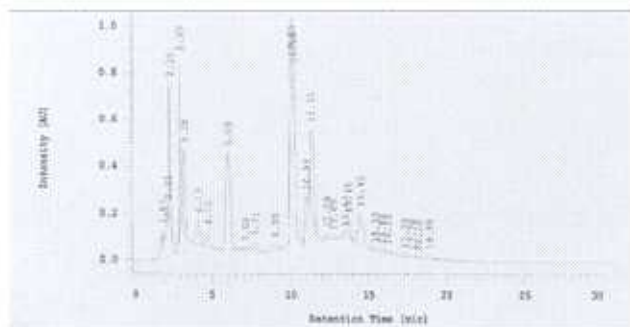
**Packing suggestions: Can be packed in tetrapacks or PET bottles**

# CHEMICAL COMPOSITION OF CONCENTRATES

## BLACK TEA CONCENTRATE

CAFFEINE	1.1-1.2 mg/ml
TOTAL CATECHINS	4.0-4.5 mg/ml
TOTAL POLYPHENOLS	16-17 mg/ml
SP. GRAVITY	1.007

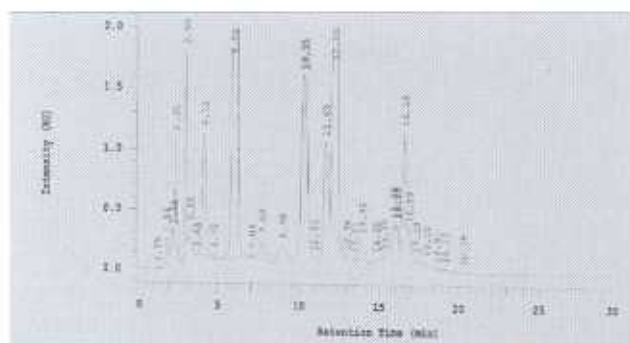
### Indicative finger print profile for Black Tea Concentrate



## GREEN TEA CONCENTRATE

CAFFEINE	0.74-0.76 mg/ml
TOTAL CATECHINS	11.0-12.0 mg/ml
TOTAL POLYPHENOLS	25-26 mg/ml
SP. GRAVITY	1.016

### Indicative finger print profile for Green Tea Concentrate



**pH of the concentrates is 4.755.00**

Tea polyphenols protect from cancer, prevent gingivitis, lower cholesterol and high blood pressure. They also improve the immune functions and prostrate health.

**Cost of RTD/L  
(at Lab. Scale)**

	Rs/-
Cost of concentrate	1.25
Cost of Pure Water	2.00
Cost of Sugar	1.10
Cost of Carbonation	2.50
Miscellaneous	0.25
<b>Total</b>	<b>7.10</b>

**Note: Cost may decrease at Commercial scale.**

**Technology transfer will be governed by CSIR Guidelines.**

**For test marketing batch production can be carried at IHBT under prior memorandum of understanding. If need be extraction facilities can be provided.**

**On site testing of quality parameters is available through quality control laboratory.**



**Contact Address:  
Director  
Institute of Himalayan  
Bioresource Technology,  
Palampur-176 061, H.P.**

**Email: [director@ihbt.csir.res.in](mailto:director@ihbt.csir.res.in)**

**Ph: +91-1894-230411**

**Fax: +91-1894-230433**

**Website: [w3.ihbt.csir.res.in](http://w3.ihbt.csir.res.in)**